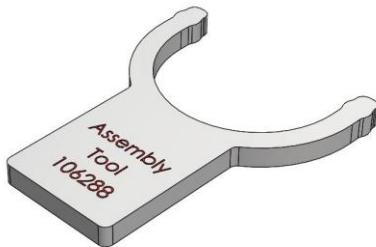
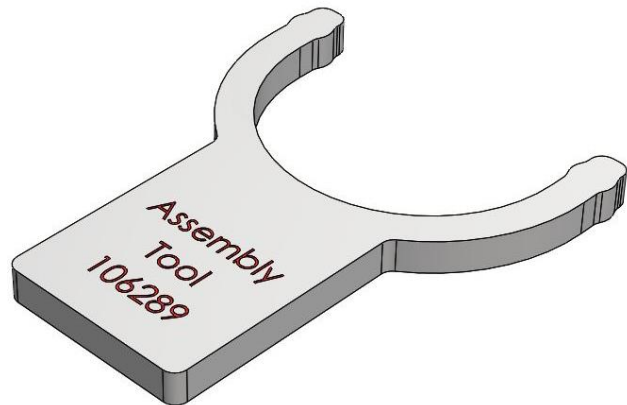


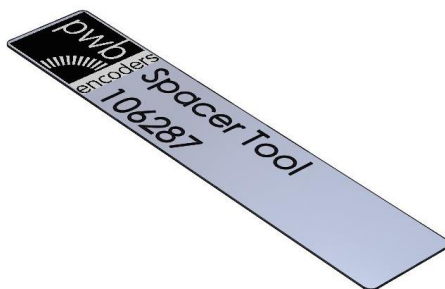
Available accessories



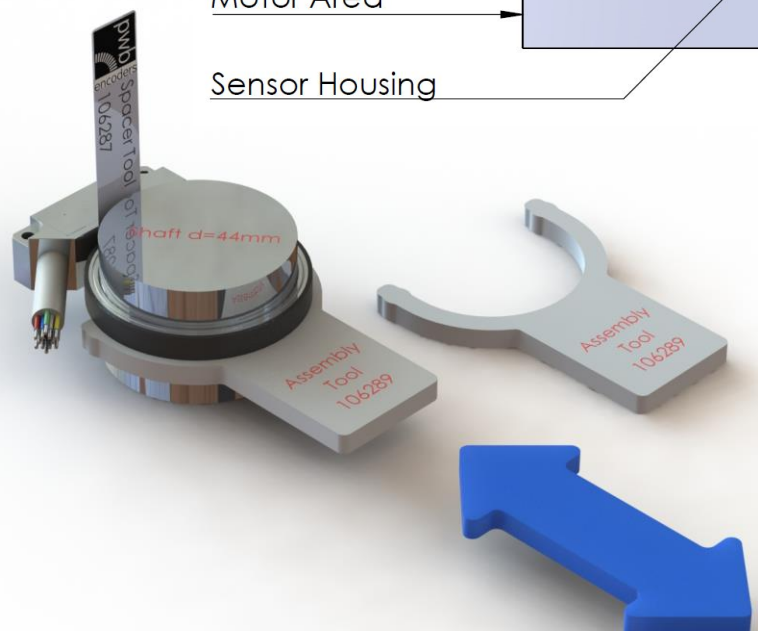
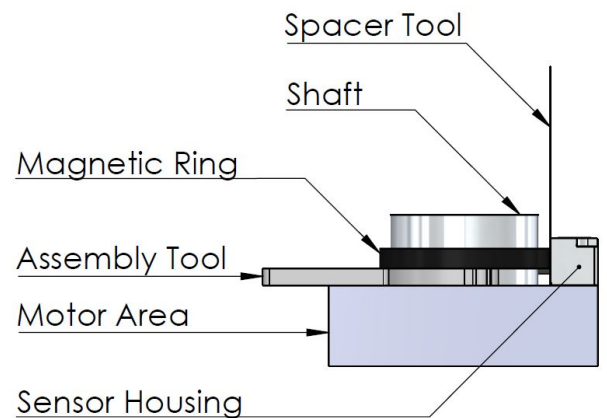
Art. Nr.: 106288: Assembly Tool for AS25
Thickness 5mm
For the magnet wheels as press fit version
with max. shaft diameter 20mm



Art. Nr. 106289: Assembly Tool for AS50
Thickness 5mm
For the magnet wheels as press fit version
with max. shaft diameter 44mm



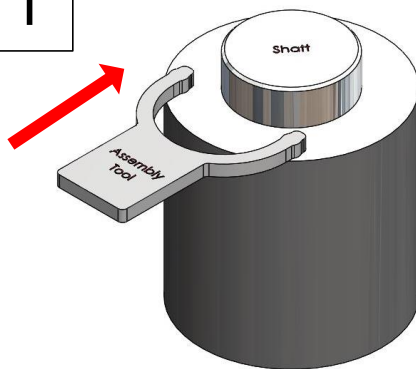
Spacer Tool for AS25 and AS50
Thickness 5mm



杰德國際股份有限公司
Kaltec International co.,ltd
新北市板橋區雙十路二段6~10號7F.
TEL:02-22555711
FAX:02-22537636
email: kaltec@kaltec.com.tw

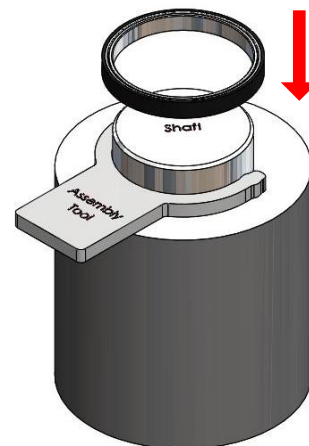
MOUNTING INSTRUCTION

1



Set the Assembly Tool onto the motor

2



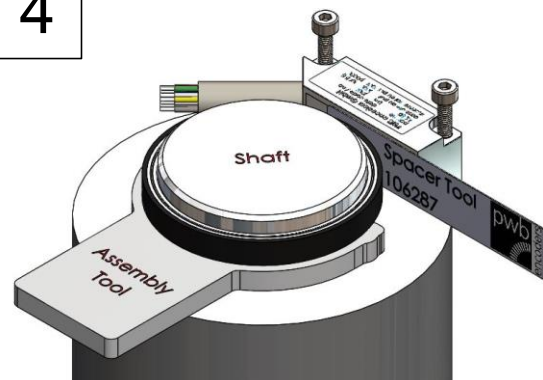
Put the magnet wheel onto the motor shaft

3



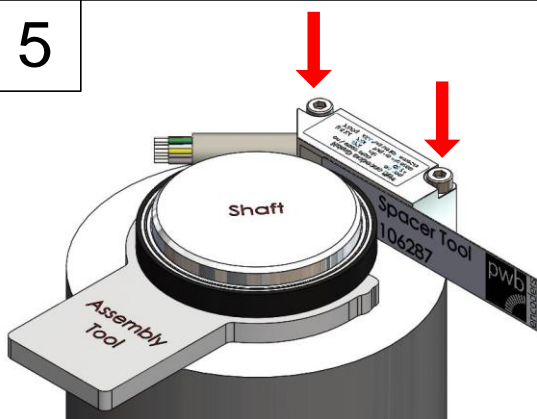
The magnet wheel and the Assembly Tool must lie flat

4



Set the Spacer Tool between the magnet wheel and the sensor head

5



Tighten the screws

6



Remove the Spacer Tool and the Assembly Tool